



SOLUÇÕES INDUSTRIAIS

Missão

Fornecer produtos de qualidade, com ágil e excelente atendimento para nossos clientes em todo território nacional.

Visão

Ser referencia no mercado de tubos e conexões voltado para a indústria em geral.

Valores

Ética, comprometimento, responsabilidade e transparência são os nossos principais valores para atingir os nossos objetivos.

01.	Conexões Roscadas	
	Conexões Retas	04
	Conexões Angulares	11
02.	Conexões Anilhadas	
	Conexões Retas	15
	Conexões Angulares	30
03.	Informações Adicionais	
	Índice de Conteúdo	03
	Página de Contato	38

Niple Sextavado NPT



CÓDIGO	ROSCA
	POL
NS-2-316	1/8
NS-4-316	1/4
NS-6-316	3/8
NS-8-316	1/2
NS-12-316	3/4
NS-16-316	1

Niple Sextavado BSP



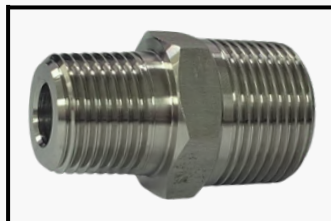
CÓDIGO	ROSCA
	POL
NS-2B-316	1/8
NS-4B-316	1/4
NS-6B-316	3/8
NS-8B-316	1/2
NS-12B-316	3/4

Niple Curto NPT



CÓDIGO	ROSCA	
	POL	
NR-2-316	1/8	
NR-4-316	1/4	
NR-6-316	3/8	
NR-8-316	1/2	
NR-12-316	3/4	
NR-16-316	1	

Niple Redutor Sext. NPT



CÓDIGO	ROSCA POL	
	T1	T2
NRS-4.2-316	1/4	1/8
NRS-6.2-316	3/8	1/8
NRS-6.4-316		1/4
NRS-8.2-316	1/2	1/8
NRS-8.4-316		1/4
NRS-8.6-316		3/8
NRS-12.6-316	3/4	3/8
NRS-12.8-316		1/2
NRS-16.8-316	1	1/2
NRS-16.12-316		3/4

Niple Sext. Longo NPT



CÓDIGO	ROSCA	EXTENSÃO
	POL	POL MM
NS-2.20-316	1/8	1.1/4 31,75
NS-4.24-316	1/4	1.1/2 38,10
NS-4.28-316		1.3/4 44,45
NS-6.32-316	3/8	2 50,80
NS-6.40-316		2.1/2 63,50
NS-8.40-316	1/2	2.1/2 63,50
NS-8.48-316		3 76,20
NS-12.48-316	3/4	3 76,20
NS-12.64-316		4 101,60
NS-16.64-316	1	4 101,60

Niple Red. Longo NPT



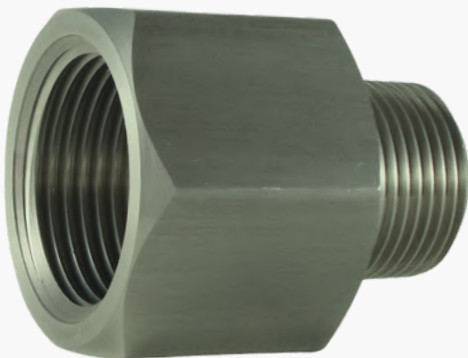
CÓDIGO	ROSCA	EXTENSÃO
	POL	POL MM
NR-2.20-316	1/8	1.1/4 31,75
NR-4.24-316	1/4	1.1/2 38,10
NR-4.28-316		1.3/4 44,45
NR-6.32-316	3/8	2 50,80
NR-6.40-316		2.1/2 63,50
NR-8.40-316	1/2	2.1/2 63,50
NR-8.48-316		3 76,20
NR-12.48-316	3/4	3 76,20
NR-12.64-316		4 101,60
NR-16.64-316	1	4 101,60

Redutora M/F NPT



CÓDIGO	ROSCA	
	MACHO	FÊMEA
BRMF-4.2-316	1/4"	1/8"
BRMF-6.2-316	3/8"	1/8"
BRMF-6.4-316		1/4"
BRMF-8.4-316	1/2"	1/4"
BRMF-8.6-316		3/8"
BRMF-12.6-316	3/4"	3/8"
BRMF-12.8-316		1/2"
BRMF-16.8-316	1"	1/2"
BRMF-16.12-316		3/4"

União M/F NPT



CÓDIGO	ROSCA POL	
	MACHO	FÊMEA
UMF-2-316	1/8	1/8
UMF-4-316	1/4	1/4
UMF-4.6-316		3/8
UMF-6-316	3/8	3/8
UMF-6.8-316		1/2
UMF-8-316	1/2	1/2
UMF-8.12-316		3/4
UMF-12-316	3/4	3/4
UMF-12.16-316		1
UMF-16-316	1	1

União Fêmea NPT



CÓDIGO	ROSCA
	POL
UF-2-316	1/8
UF-4-316	1/4
UF-6-316	3/8
UF-8-316	1/2
UF-12-316	3/4
UF-16-316	1

Redutora Fêmea NPT



CÓDIGO	ROSCA POL	
	T1	T2
URF-4.2-316	1/4	1/8
URF-6.2-316	3/8	1/8
URF-6.4-316		1/4
URF-8.4-316	1/2	1/4
URF-8.6-316		3/8
URF-12.6-316	3/4	3/8
URF-12.8-316		1/2
URF-16.8-316	1	1/2
URF-16.12-316		3/4

Tampão Macho NPT



CÓDIGO	ROSCA
	POL
TPM-2-316	1/8
TPM-4-316	1/4
TPM-6-316	3/8
TPM-8-316	1/2
TPM-12-316	3/4
TPM-16-316	1

Tampão Fêmea NPT



CÓDIGO	ROSCA
	POL
TPF-2-316	1/8
TPF-4-316	1/4
TPF-6-316	3/8
TPF-8-316	1/2
TPF-12-316	3/4
TPF-16-316	1

Espigão Macho NPT



CÓDIGO	Ø MANGUEIRA	ROSCA
	POL MM	POL
BMM-2-316	1/8 3,17	1/8
BMM-2.4-316		1/4
BMM-4-316	1/4 6,35	1/4
BMM-4.6-316		3/8
BMM-6-316	3/8 9,53	3/8
BMM-6.8-316		1/2
BMM-8-316	1/2 12,70	1/2
BMM-8.12-316		3/4
BMM-12-316	3/4 19,05	3/4

Espigão Fêmea NPT



CÓDIGO	Ø MANGUEIRA	ROSCA
	POL MM	POL
BMF-2-316	1/8 3,17	1/8
BMF-2.4-316		1/4
BMF-4-316	1/4 6,35	1/4
BMF-4.6-316		3/8
BMF-6-316	3/8 9,53	3/8
BMF-6.8-316		1/2
BMF-8-316	1/2 12,70	1/2
BMF-8.12-316		3/4
BMF-12-316	3/4 19,05	3/4

Cotovelo Macho NPT



CÓDIGO	ROSCA
	POL
C-M-2-316	1/8
C-M-4-316	1/4
C-M-6-316	3/8
C-M-8-316	1/2
C-M-12-316	3/4
C-M-16-316	1

Cotovelo Fêmea NPT



CÓDIGO	ROSCA
	POL
C-F-2-316	1/8
C-F-4-316	1/4
C-F-6-316	3/8
C-F-8-316	1/2
C-F-12-316	3/4

Cotovelo M/F NPT



CÓDIGO	ROSCA
	POL
C-MF-2-316	1/8
C-MF-4-316	1/4
C-MF-6-316	3/8
C-MF-8-316	1/2
C-MF-12-316	3/4

Tee Macho NPT



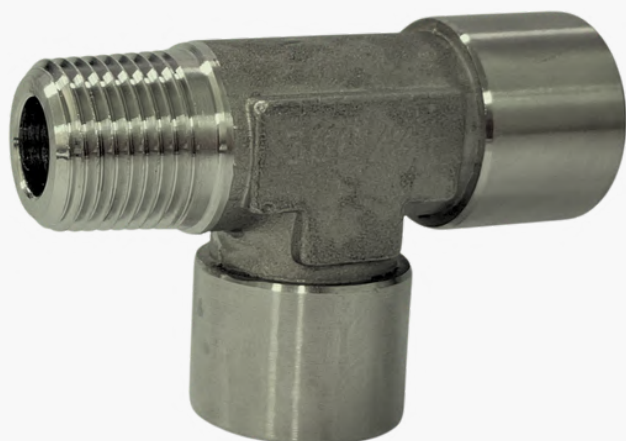
CÓDIGO	ROSCA
	POL
T-M-2-316	1/8
T-M-4-316	1/4
T-M-6-316	3/8
T-M-8-316	1/2
T-M-12-316	3/4
T-M-16-316	1

Tee Fêmea NPT



CÓDIGO	ROSCA
	POL
T-F-2-316	1/8
T-F-4-316	1/4
T-F-6-316	3/8
T-F-8-316	1/2
T-F-12-316	3/4

**Tee Fêmea c/ Macho
Lateral NPT**



CÓDIGO	ROSCA M/F
	POL
T-MFF-2-316	1/8
T-MFF-4-316	1/4
T-MFFF-6-316	3/8
T-MFF-8-316	1/2
T-MFF-12-316	3/4

**Tee Fêmea c/ Macho
Central NPT**



CÓDIGO	ROSCA
	POL
T-FMF-2-316	1/8
T-FMF-4-316	1/4
T-FMF-6-316	3/8
T-FMF-8-316	1/2
T-FMF-12-316	3/4

Cruzeta Fêmea NPT



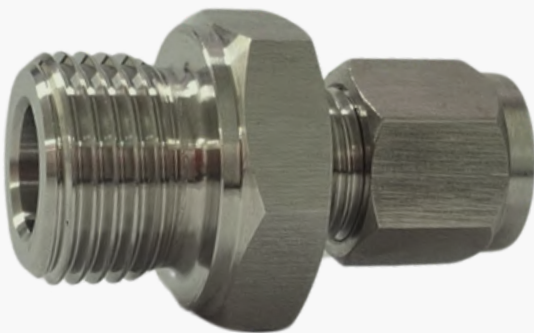
CÓDIGO	ROSCA
	POL
CZ-UF-2-316	1/8
CZ-UF-4-316	1/4
CZ-UF-6-316	3/8
CZ-UF-8-316	1/2

Conector Macho NPT



CÓDIGO	Ø TUBO	ROSCA
	POL MM	POL
CM-2-316	1/8 3,17	1/8
CM-4-316	1/4 6,35	1/4
CM-4.6-316		3/8
CM-6-316	3/8 9,53	3/8
CM-6.8-316		1/2
CM-8-316	1/2 12,70	1/2
CM-8.12-316		3/4
CM-10.8-316	5/8 15,87	1/2
CM-12-316	3/4 19,05	3/4
CM-12.16-316		1

Conector Macho BSP



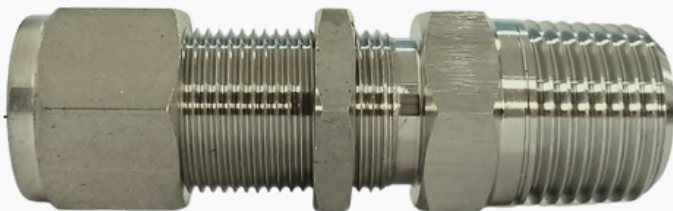
CÓDIGO	Ø TUBO	ROSCA
	POL MM	POL
CM-2B-316	1/8 3,17	1/8
CM-4B-316	1/4 6,35	1/4
CM-4.6B-316		3/8
CM-6B-316	3/8 9,53	3/8
CM-6.8B-316		1/2
CM-8B-316	1/2 12,70	1/2
CM-8.12B-316		3/4
CM-10.8B-316	5/8 15,87	1/2
CM-10.12B-316		3/4
CM-12B-316	3/4 19,05	3/4

Conector Macho Termopar (Tubo Passante) NPT



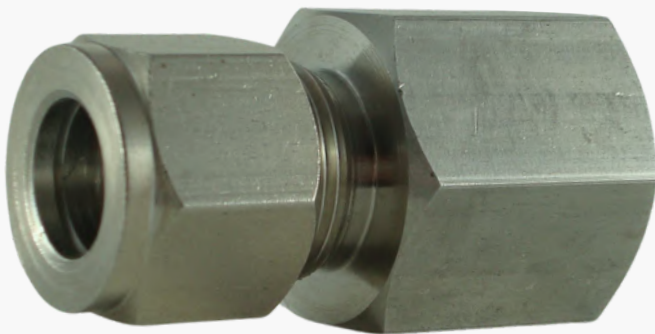
CÓDIGO	Ø TUBO	ROSCA
	POL MM	POL
CMT-2-316	1/8 3,17	1/8
CMT-4-316	1/4 6,35	1/4
CMT-4.6-316		3/8
CMT-6-316	3/8 9,53	3/8
CMT-6.8-316		1/2
CMT-8-316	1/2 12,70	1/2
CMT-8.12-316		3/4
CMT-10.8-316	5/8 15,87	1/2
CMT-12-316	3/4 19,05	3/4
CMT-12.16-316		1

Conector Macho Bulkhead (Painel) NPT



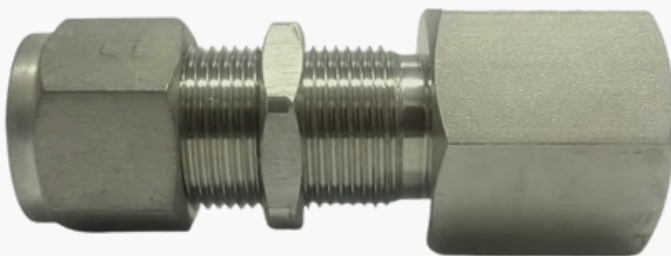
CÓDIGO	Ø TUBO	ROSCA
	POL MM	POL
CBM-2-316	1/8 3,17	1/8
CBM-4-316	1/4 6,35	1/4
CBM-4.6-316		3/8
CBM-6-316	3/8 9,53	3/8
CBM-6.8-316		1/2
CBM-8-316	1/2 12,70	1/2
CBM-8.12-316		3/4
CBM-10.8-316	5/8 15,87	1/2
CBM-10.12-316		3/4
CBM-12-316	3/4 19,05	3/4

Conector Fêmea NPT



CÓDIGO	Ø TUBO	ROSCA
	POL MM	POL
CF-2-316	1/8 3,17	1/8
CF-4-316	1/4 6,35	1/4
CF-4.6-316		3/8
CF-6-316	3/8 9,53	3/8
CF-6.8-316		1/2
CF-8-316	1/2 12,70	1/2
CF-8.12-316		3/4
CF-10.8-316	5/8 15,87	1/2
CF-12-316	3/4 19,05	3/4
CF-12.16-316		1

Conector Fêmea Bulkhead (Painel) NPT



CÓDIGO	Ø TUBO	ROSCA
	POL MM	POL
CBF-2-316	1/8 3,17	1/8
CBF-4-316	1/4 6,35	1/4
CBF-4.6-316		3/8
CBF-6-316	3/8 9,53	3/8
CBF-6.8-316		1/2
CBF-8-316	1/2 12,70	1/2
CBF-8.12-316		3/4
CBF-10.8-316	5/8 15,87	1/2
CBF-10.12-316		3/4
CBF-12-316	3/4 19,05	3/4

**Conector SW Polegada
(Solda Encaixe)**



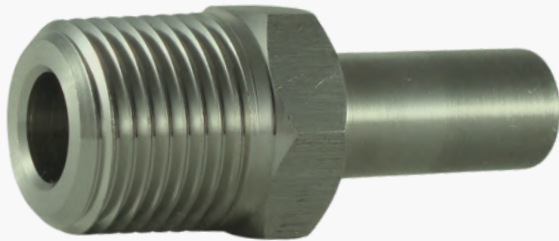
CÓDIGO	Ø TUBO - 1	Ø SW - 2
	POL MM	POL MM
CSE-2-316	1/8 3,17	1/8 3,17
CSE-2.4-316		1/4 6,35
CSE-4-316	1/4 6,35	1/4 6,35
CSE-4.6-316		3/8 9,53
CSE-6-316	3/8 9,53	3/8 9,53
CSE-6.8-316		1/2 12,70
CSE-8-316	1/2 12,70	1/2 12,70
CSE-8.12-316		3/4 19,05
CSE-10-316	5/8 15,87	5/8 15,87
CSE-12-316	3/4 19,05	3/4 19,05

**Conector BW Polegada
(Solda Topo)**



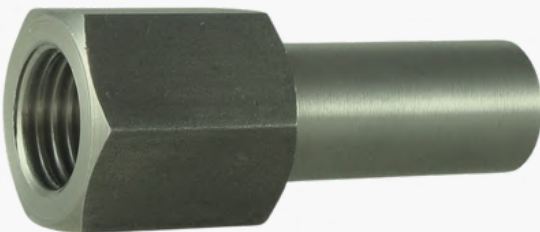
CÓDIGO	Ø TUBO	Ø BW
	POL MM	POL MM
CST-2-316	1/8 3,17	1/8 10,30
CST-2.4-316		1/4 13,70
CST-4-316	1/4 6,35	1/4 13,70
CST-4.6-316		3/8 17,10
CST-6-316	3/8 9,53	3/8 17,10
CST-6.8-316		1/2 21,30
CST-8-316	1/2 12,70	1/2 21,30
CST-8.12-316		3/4 26,70
CST-12-316	3/4 19,05	3/4 26,70
CST-12.16-316		1 33,40

Adaptador Macho NPT



CÓDIGO	Ø PTA. LISA	ROSCA
	POL MM	POL
TM-2-316	1/8 3,17	1/8
TM-2.4-316		1/4
TM-4-316	1/4 6,35	1/4
TM-4.6-316		3/8
TM-6-316	3/8 9,53	3/8
TM-6.8-316		1/2
TM-8-316	1/2 12,70	1/2
TM-8.12-316		3/4
TM-12-316	3/4 19,05	3/4

Adaptador Fêmea NPT



CÓDIGO	Ø PTA. LISA	ROSCA
	POL MM	POL
TF-2-316	1/8 3,17	1/8
TF-2.4-316		1/4
TF-4-316	1/4 6,35	1/4
TF-4.6-316		3/8
TF-6-316	3/8 9,53	3/8
TF-6.8-316		1/2
TF-8-316	1/2 12,70	1/2
TF-8.12-316		3/4
TF-12-316	3/4 19,05	3/4

Adaptador Tubo Polegada



CÓDIGO	Ø TUBO	Ø PTA. LISA
	POL MM	POL MM
TT-2-316	1/8 3,17	1/8 3,17
TT-2.4-316		1/4 6,35
TT-4-316	1/4 6,35	1/4 6,35
TT-4.6-316		3/8 9,53
TT-6-316	3/8 9,53	3/8 9,53
TT-6.8-316		1/2 12,70
TT-8-316	1/2 12,70	1/2 12,70
TT-8.12-316		3/4 19,05
TT-10-316	5/8 15,87	5/8 15,87
TT-12-316	3/4 19,05	3/4 19,05

Adaptador Tubo Métrico



CÓDIGO	Ø TUBO	Ø PTA. LISA
	MM	MM
TT-M6-316	6,00	6,00
TT-M6.M8-316		8,00
TT-M8-316	8,00	8,00
TT-M8.10-316		10,00
TT-M10-316	10,00	10,00
TT-M10.M12-316		12,00
TT-M12-316	12,00	12,00
TT-M12.M16-316		16,00
TT-M16-316	16,00	16,00
TT-M16.M19-316		19,00

União Polegada



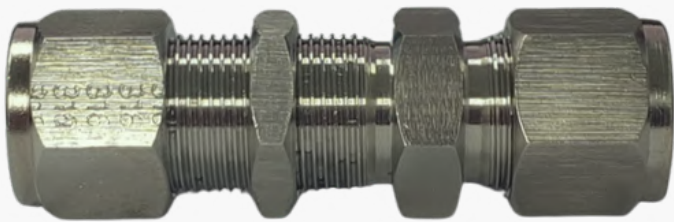
CÓDIGO	Ø TUBO
	POL MM
U-2-316	1/8 3,17
U-3-316	3/16 4,76
U-4-316	1/4 6,35
U-5-316	5/16 7,93
U-6-316	3/8 9,53
U-8-316	1/2 12,70
U-10-316	5/8 15,87
U-12-316	3/4 19,05

União Métrica



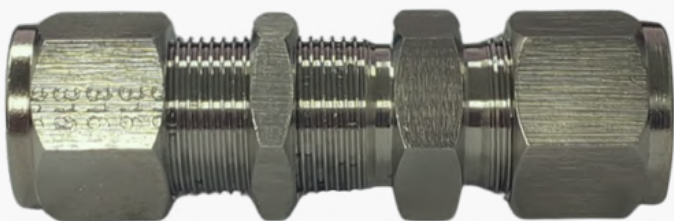
CÓDIGO	Ø TUBO
	MM
U-M6 -316	6,00
U-M8-316	8,00
U-M10-316	10,00
U-M12-316	12,00
U-M16-316	16,00
U-M19-316	19,00

União Bulkhead Polegada



CÓDIGO	Ø TUBO
	POL MM
U-2-316	1/8 3,17
U-3-316	3/16 4,76
U-4-316	1/4 6,35
U-5-316	5/16 7,93
U-6-316	3/8 9,53
U-8-316	1/2 12,70
U-10-316	5/8 15,87
U-12-316	3/4 19,05

União Bulkhead Métrica



CÓDIGO	Ø TUBO
	MM
U-M6 -316	6,00
U-M8-316	8,00
U-M10-316	10,00
U-M12-316	12,00
U-M16-316	16,00
U-M19-316	19,00

União Redutora Polegada



CÓDIGO	Ø TUBO - 1	Ø TUBO - 2
	POL MM	POL MM
UR-4.2-316	1/4 6,35	1/8 3,17
UR-6.2-316	3/8 9,53	1/8 3,17
UR-6.4-316		1/4 6,35
UR-8.4-316	1/2 12,70	1/4 6,35
UR-8.6-316		3/8 9,53
UR-10.6-316	5/8 15,87	3/8 9,53
UR-10.8-316		1/2 12,70
UR-12.8-316	3/4 19,05	1/2 12,70
UR-12.10-316		5/8 15,87

União Redutora Métrica



CÓDIGO	Ø TUBO - MM	
	T1	T2
UR-M8.M6-316	8,00	6,00
UR-M10.M6-316	10,00	6,00
UR-M10.M8-316		8,00
UR-M12.M8-316	12,00	8,00
UR-M12.M10-316		10,00
UR-M16.M10-316	16,00	10,00
UR-M16.M12-316		12,00
UR-M19.M12-316	19,00	12,00
UR-M19.M16-316		16,00

Tampão Tubo Métrico



CÓDIGO	Ø TUBO
	POL MM
TPT-2-316	1/8 3,17
TPT-3-316	3/16 4,76
TPT-4-316	1/4 6,35
TPT-5-316	5/16 7,93
TPT-6-316	3/8 9,53
TPT-8-316	1/2 12,70
TPT-10-316	5/8 15,87
TPT-12-316	3/4 19,05

Tampão Tubo Polegada



CÓDIGO	Ø TUBO
	MM
TPT-M6 -316	6,00
TPT-M8-316	8,00
TPT-M10-316	10,00
TPT-M12-316	12,00
TPT-M16-316	16,00
TPT-M19-316	19,00

Tampão Conexão Polegada



CÓDIGO	Ø TUBO
	POL MM
TPC-2-316	1/8 3,17
TPC-3-316	3/16 4,76
TPC-4-316	1/4 6,35
TPC-5-316	5/16 7,93
TPC-6-316	3/8 9,53
TPC-8-316	1/2 12,70
TPC-10-316	5/8 15,87
TPC-12-316	3/4 19,05

Tampão Conexão Métrico



CÓDIGO	Ø TUBO
	MM
TPC-M6 -316	6,00
TPC-M8-316	8,00
TPC-M10-316	10,00
TPC-M12-316	12,00
TPC-M16-316	16,00
TPC-M19-316	19,00

Anilha Dianteira Polegada



CÓDIGO	Ø TUBO
	POL MM
AD-2-316	1/8 3,17
AD-3-316	3/16 4,76
AD-4-316	1/4 6,35
AD-5-316	5/16 7,93
AD-6-316	3/8 9,53
AD-8-316	1/2 12,70
AD-10-316	5/8 15,87
AD-12-316	3/4 19,05

Anilha Dianteira Métrica



CÓDIGO	Ø TUBO
	MM
AD-M6 -316	6,00
AD-M8-316	8,00
AD-M10-316	10,00
AD-M12-316	12,00
AD-M16-316	16,00
AD-M19-316	19,00

Anilha Traseira Polegada



CÓDIGO	Ø TUBO
	POL MM
AT-2-316	1/8 3,17
AT-3-316	3/16 4,76
AT-4-316	1/4 6,35
AT-5-316	5/16 7,93
AT-6-316	3/8 9,53
AT-8-316	1/2 12,70
AT-10-316	5/8 15,87
AT-12-316	3/4 19,05

Anilha Traseira Métrica



CÓDIGO	Ø TUBO
	MM
AT-M6 -316	6,00
AT-M8-316	8,00
AT-M10-316	10,00
AT-M12-316	12,00
AT-M16-316	16,00
AT-M19-316	19,00

**Conjunto de Anilhas
Polegada**



CÓDIGO	Ø TUBO
	POL MM
ADAT-2-316	1/8 3,17
ADAT-3-316	3/16 4,76
ADAT-4-316	1/4 6,35
ADAT-5-316	5/16 7,93
ADAT-6-316	3/8 9,53
ADAT-8-316	1/2 12,70
ADAT-10-316	5/8 15,87
ADAT-12-316	3/4 19,05

**Conjunto de Anilhas
Métrica**



CÓDIGO	Ø TUBO
	MM
ADAT-M6 -316	6,00
ADAT-M8-316	8,00
ADAT-M10-316	10,00
ADAT-M12-316	12,00
ADAT-M16-316	16,00
ADAT-M19-316	19,00

Porca Polegada



CÓDIGO	Ø TUBO
	POL MM
FG-2-316	1/8 3,17
FG-3-316	3/16 4,76
FG-4-316	1/4 6,35
FG-5-316	5/16 7,93
FG-6-316	3/8 9,53
FG-8-316	1/2 12,70
FG-10-316	5/8 15,87
FG-12-316	3/4 19,05

Porca Métrica



CÓDIGO	Ø TUBO
	MM
FG-M6 -316	6,00
FG-M8-316	8,00
FG-M10-316	10,00
FG-M12-316	12,00
FG-M16-316	16,00
FG-M19-316	19,00

Cotovelo Macho NPT



CÓDIGO	Ø TUBO	ROSCA
	POL MM	POL
C-TM-2-316	1/8 3,17	1/8
C-TM-2.4-316		1/4
C-TM-4-316	1/4 6,35	1/4
C-TM-4.6-316		3/8
C-TM-6-316	3/8 9,53	3/8
C-TM-6.8-316		1/2
C-TM-8-316	1/2 12,70	1/2
C-TM-8.12-316		3/4
C-TM-12-316	3/4 19,05	3/4

Cotovelo Fêmea NPT



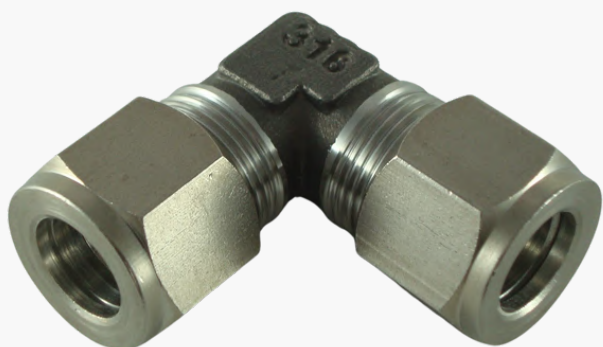
CÓDIGO	Ø TUBO	ROSCA
	POL MM	POL
C-TF-2-316	1/8 3,17	1/8
C-TF-2.4-316		1/4
C-TF-4-316	1/4 6,35	1/4
C-TF-4.6-316		3/8
C-TF-6-316	3/8 9,53	3/8
C-TF-6.8-316		1/2
C-TF-8-316	1/2 12,70	1/2
C-TF-8.12-316		3/4
C-TF-12-316	3/4 19,05	3/4

Cotovelo União Polegada



CÓDIGO	Ø TUBO
	POL MM
C-U-2-316	1/8 3,17
C-U-3-316	3/16 4,76
C-U-4-316	1/4 6,35
C-U-5-316	5/16 7,93
C-U-6-316	3/8 9,53
C-U-8-316	1/2 12,70
C-U-10-316	5/8 15,87
C-U-12-316	3/4 19,05

Cotovelo União Métrica



CÓDIGO	Ø TUBO
	MM
C-U-M6 -316	6,00
C-U-M8-316	8,00
C-U-M10-316	10,00
C-U-M12-316	12,00
C-U-M16-316	16,00
C-U-M19-316	19,00

Tee Macho Central NPT



CÓDIGO	Ø TUBO	ROSCA
	POL MM	POL
T-TMT-2-316	1/8 3,17	1/8
T-TMT-2.4-316		1/4
T-TMT-4-316	1/4 6,35	1/4
T-TMT-4.6-316		3/8
T-TMT-6-316	3/8 9,53	3/8
T-TMT-6.8-316		1/2
T-TMT-8-316	1/2 12,70	1/2
T-TMT-8.12-316		3/4
T-TMT-12-316	3/4 19,05	3/4

Tee Macho Lateral NPT



CÓDIGO	Ø TUBO	ROSCA
	POL MM	POL
T-TTM-2-316	1/8 3,17	1/8
T-TTM-2.4-316		1/4
T-TTM-4-316	1/4 6,35	1/4
T-TTM-4.6-316		3/8
T-TTM-6-316	3/8 9,53	3/8
T-TTM-6.8-316		1/2
T-TTM-8-316	1/2 12,70	1/2
T-TTM-8.12-316		3/4
T-TTM-12-316	3/4 19,05	3/4

Tee Fêmea Central NPT



CÓDIGO	Ø TUBO	ROSCA
	POL MM	POL
T-TFT-2-316	1/8 3,17	1/8
T-TFT-2.4-316		1/4
T-TFT-4-316	1/4 6,35	1/4
T-TFT-4.6-316		3/8
T-TFT-6-316	3/8 9,53	3/8
T-TFT-6.8-316		1/2
T-TFT-8-316	1/2 12,70	1/2
T-TFT-8.12-316		3/4
T-TFT-12-316	3/4 19,05	3/4

Tee Fêmea Lateral NPT



CÓDIGO	Ø TUBO	ROSCA
	POL MM	POL
T-TTF-2-316	1/8 3,17	1/8
T-TTF-2.4-316		1/4
T-TTF-4-316	1/4 6,35	1/4
T-TTF-4.6-316		3/8
T-TTF-6-316	3/8 9,53	3/8
T-TTF-6.8-316		1/2
T-TTF-8-316	1/2 12,70	1/2
T-TTF-8.12-316		3/4
T-TTF-12-316	3/4 19,05	3/4

Tee União Polegada



CÓDIGO	Ø TUBO
	POL MM
T-U-2-316	1/8 3,17
T-U-3-316	3/16 4,76
T-U-4-316	1/4 6,35
T-U-5-316	5/16 7,93
T-U-6-316	3/8 9,53
T-U-8-316	1/2 12,70
T-U-10-316	5/8 15,87
T-U-12-316	3/4 19,05

Tee União Métrica



CÓDIGO	Ø TUBO
	MM
T-U-M6 -316	6,00
T-U-M8-316	8,00
T-U-M10-316	10,00
T-U-M12-316	12,00
T-U-M16-316	16,00
T-U-M19-316	19,00

Tee Redutor Central Polegada



CÓDIGO	Ø TUBO POL	Ø TUBO POL
	T2	T1 T3
T-U-3.2.3-316	1/8 3,17	3/16 4,76
T-U-4.2.4-316		1/4 6,35
T-U-5.4.5-316	1/4 6,35	5/16 7,93
T-U-6.4.6-316		3/8 9,53
T-U-8.6.8-316	3/8 9,53	1/2 12,70
T-U-10.6.10-316		5/8 15,87
T-U-10.8.10-316	1/2 12,70	5/8 15,87
T-U-12.8.12-316		3/4 19,05

Tee Redutor Central Métrico



CÓDIGO	Ø TUBO MM	Ø TUBO MM
	T2	T1 T3
T-U-M8.M6.M8 -316	6,00	8,00
T-U-M10.M8.M10-316	8,00	10,00
T-U-M12.M8.M12-316		12,00
T-U-M12.M10.M12-316	10,00	12,00
T-U-M16.M10.M16-316		16,00
T-U-M16.M12.M16-316	12,00	16,00
T-U-M19.M12.M19-316		19,00
T-U-M19.M16.M19-316	16,00	19,00

Cruzeta União Polegada



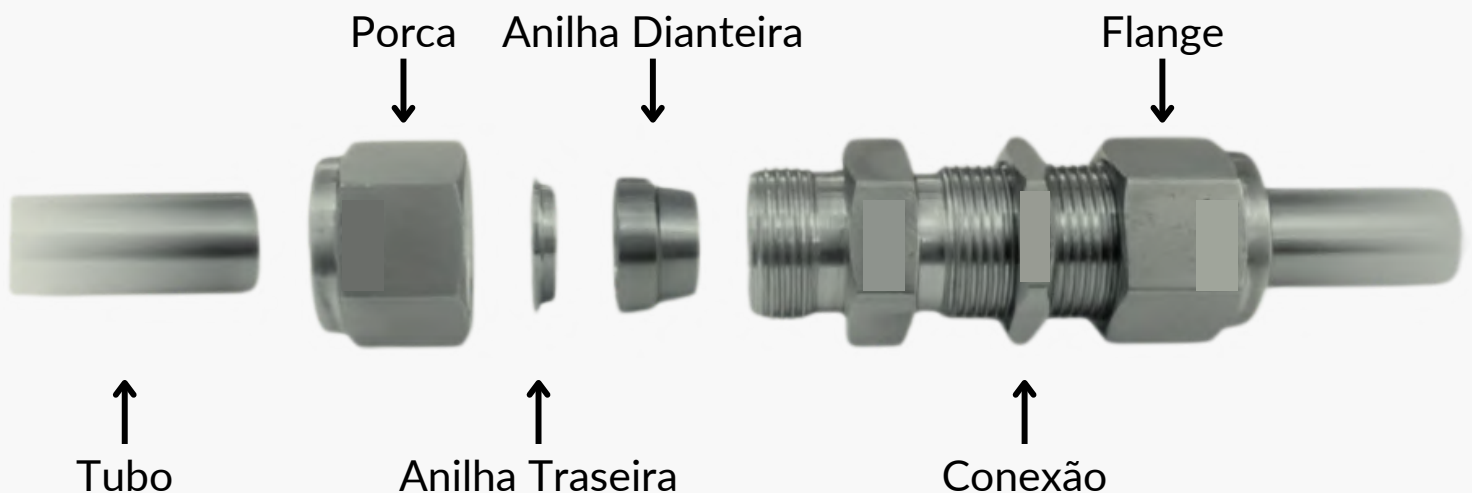
CÓDIGO	Ø TUBO
	POL MM
CZ-U-2-316	1/8 3,17
CZ-U-3-316	3/16 4,76
CZ-U-4-316	1/4 6,35
CZ-U-5-316	5/16 7,93
CZ-U-6-316	3/8 9,53
CZ-U-8-316	1/2 12,70
CZ-U-10-316	5/8 15,87
CZ-U-12-316	3/4 19,05

Cruzeta União Métrica



CÓDIGO	Ø TUBO
	MM
CZ-U-M6 -316	6,00
CZ-U-M8-316	8,00
CZ-U-M10-316	10,00
CZ-U-M12-316	12,00
CZ-U-M16-316	16,00
CZ-U-M19-316	19,00

01. Desaperte a porca sem desmontar a conexão por completo;
02. Encaixe o tubo no furo da porca até bater no fundo da conexão (o corte deve estar no esquadro e sem rebarbas);
03. Dê um leve aperto até perceber que o tubo está levemente fixado e sem folga (apenas para segurar o tubo);
04. Com o auxílio da chave correta, aperte a porca no sentido horário por 1 volta e 1/4;
05. No caso de desmontagem da conexão, o reaperto deve ser realizado até que se encontre uma leve resistência;
06. Obs: Sempre utilizar tubo de inox sem costura (ASTM A269).





(21) 99830 8593



comercial@lcsolucoesindustriais.com.br



Av. das Américas, 8505 - s209 - Barra da Tijuca, Rio de
Janeiro - RJ, 22793-081



SOLUÇÕES INDUSTRIAIS